

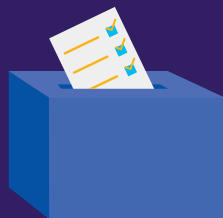
An Important Message from Your Union

THREE EASY WAYS TO VOTE



Vote by Mail

Apply before Tuesday,
October 20



Vote Early

Starts Monday, October 26



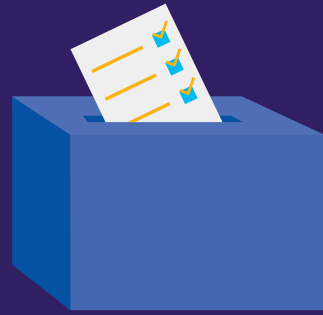
Vote on Election Day

Tuesday, November 3

**Make a Plan to Vote for
Pro-Public Education Candidates**

MDAppleBallot.com

WHAT IS YOUR VOTING PLAN?



VOTE BY MAIL

TODAY

Return your vote by mail application from the Board of Elections.

OR

Visit Elections.Maryland.gov to complete and submit an application.



BEFORE OCTOBER 20

Return your application to the Board of Elections.



AFTER YOUR VOTE BY MAIL APPLICATION IS PROCESSED

Your ballot will be sent to you.



NO LATER THAN NOVEMBER 3

Sign and mail in your ballot. Don't wait until the last minute!

OR

Bring your completed ballot to a voting center in your county.

OR

Drop off your completed ballot at an official ballot drop box.



VOTE IN PERSON

VOTE EARLY

October 26 - November 2

Find an early voting center in your county at bit.ly/mdvotecenters.

Early voting centers are open from 7 A.M. until 8 P.M.



OR

VOTE ON ELECTION DAY

Tuesday, November 3

You can go to any Election Day voting center in your county as your normal polling place may not be available. Find the nearest voting center at bit.ly/mdvotecenters.

Voting centers are open from 7 A.M. until 8 P.M.



MDAppleBallot.com