

# Your MSEA Election 2012 Voting Guide

## Make a difference! Vote in this year's MSEA Election!

To successfully protect education funding and fight for educators' priorities, MSEA leadership must remain strong, active, and influential. This year, members will elect a new president and vice president who will serve the next three years, as well as five members of the 16-member MSEA Board of Directors. These leaders set the course for MSEA and decide how to use its staff and resources.

As members face the challenges of the times, your professional association must help lead the important discussions wherever they are—in the State House with the governor, in the hearing rooms of delegates and senators, and at the board of education. Help elect the leaders you want to carry your message.

On the following pages, you'll find names, brief biographical information, and statements from candidates for MSEA president and vice president, MSEA and NEA directors, and delegates to the NEA Representative Assembly in June.

Make a difference—vote!

### SPECIAL NOTICE

#### FASSE • HCEA (Howard)

**Vote online!** If you're a member of the Frederick Association of School Support Employees (FASSE) or the Howard County Education Association (HCEA), you'll use MSEA's Online Voting System for MSEA's 2012 Election.

It's easy! All you need is internet access, your MSEA membership number found on the mailing label of this issue of *ActionLine*, and the last four digits of your Social Security number. Visit [www.marylandeducators.org/mseaelection2012](http://www.marylandeducators.org/mseaelection2012) or look for the "Vote Here" button on the homepage at [www.marylandeducators.org](http://www.marylandeducators.org).

**Don't forget!** Vote online anytime January 23–February 24. Online voting closes February 24 at 5 p.m.!

Your membership number

#### \*\*\*\*\*ECRLOT\*\*C001

Your Name → 0005754188  
555 Anywhere Drive  
Your Town, MD 00000-0000

### Important Election Dates

**January 25, 2012**  
Deadline for ballots to arrive in schools

**February 24, 2012 5 p.m.**  
Deadline for receipt of ballots

**March 9, 2012**  
Election results validated at MSEA

### Not sure what MSEA leaders do?

At the beginning of each section, you'll find a brief description of the positions you'll be voting to fill. In the meantime, here's the short story of what's on the ballot this year:

• **MSEA President**  
*Three-year term*  
August 1, 2012 – July 31, 2015

• **MSEA Vice President**  
*Three-year term*  
August 1, 2012 – July 31, 2015

• **MSEA Director**  
*Four to be elected*  
*Three-year term*  
August 1, 2012 – July 31, 2015

• **NEA Director**  
*One to be elected*  
*Three-year term*  
September 1, 2012 – August 31, 2015

• **MSEA Delegates**  
*Approximately 50 to be elected*  
*One-year term*

#### What if there's a run-off?

In the event a run-off election is required, visit [www.marylandeducators.org/mseaelection2012](http://www.marylandeducators.org/mseaelection2012) for a schedule and candidate information. Run-off information also will be available in the March/April issue of *ActionLine*.

### Need Additional Ballots?

Contact Carole Masciarelli,  
800/448-6782, x3611;  
[cmasciarelli@mseanea.org](mailto:cmasciarelli@mseanea.org).

#### REMINDER

MSEA staff may not assist a member or candidate in any way in matters relating to MSEA Election 2012.

#### QUESTIONS?

Contact Trish Bendler or Tyrone Holmes, co-chairs, Nominations & Credentials Committee, or Susan Russell, chief counsel,  
800/448-6782, x3667,  
[srussell@mseanea.org](mailto:srussell@mseanea.org).

### There's more online!

Check out MSEA's directory at [marylandeducators.org/board](http://marylandeducators.org/board) to learn more about MSEA's 16-member Board of Directors, including photos, terms, and contact information. For more information about the roles of officers and the board of directors, and MSEA elections, see MSEA's online handbook at [marylandeducators.org/membercenter](http://marylandeducators.org/membercenter).



# PROFESSIONALS LOOK TO UNIONS TO FIND THEIR VOICE IN THE WORKPLACE

## MSEA-Retired Advisory Council Election 2012

MSEA-Retired members! Help elect two members to your seven-seat MSEA Retired Advisory Council.

*Two seats open • Three-year term each*

### HOW TO NOMINATE A CANDIDATE

- Read carefully and submit the Nomination Form on this page by the deadline below.
- Complete form by mail or fax. Submit photo by mail or email.
- No faxes or Xeroxed photos accepted.

For more information, visit [marylandeducators.org](http://marylandeducators.org), Retired Advisory Council Election, or contact Susan Russell, chief counsel, 800/448-6782, ext. 3667; [srussell@mseanea.org](mailto:srussell@mseanea.org).

**DEADLINE: FEBRUARY 20, 2012**

### SEND NOMINATION FORM TO:

MSEA Nominations & Credentials Committee  
Attn: Marilyn Kurtz  
140 Main Street  
Annapolis, MD 21401  
Fax: 410/263-5730

## MSEA-Retired Advisory Council Nomination & Intent and Biography Form • August 1, 2012 – July 31, 2015

Name \_\_\_\_\_

Street Address \_\_\_\_\_

City \_\_\_\_\_ State \_\_\_\_\_ Zip \_\_\_\_\_

Home Phone \_\_\_\_\_ Cell Phone \_\_\_\_\_

Local Association (Pre-retirement) \_\_\_\_\_

MSEA Member: \_\_\_\_\_ Years: \_\_\_\_\_ Ethnic Group: \_\_\_\_\_

Association Positions Held (Limit: 3 per category):

■ Local: \_\_\_\_\_

■ MSEA: \_\_\_\_\_

■ NEA: \_\_\_\_\_

Personal Statement: Attach a statement not exceeding 25 words. *Statements over 25 words are subject to deletion.*

LETTER OF INTENT: I hereby state my willingness to run as a candidate for the position marked above. I agree to abide by the MSEA/NEA policies and bylaws and to adhere to the Code of Ethics, as adopted by the Association.

\_\_\_\_\_  
Date Signature of Nominee

For more than 100 years, artists and teachers have come together in unions, and other professionals have followed their lead. Already, professional workers are represented by unions at a higher rate (23 percent) than the workforce at large (about 15 percent), according to the federal Bureau of Labor Statistics. And they make up the fastest-growing occupational category in the workforce. Professionals accounted for almost 27 percent of all employment growth between 1998 and 2008, according to the BLS. Listening to the needs of professionals and enabling them to gain a voice at work is a key part of activists' efforts to strengthen the union movement.

Professionals are finding that new economic pressures—managed health care, corporate mergers, threats of privatization, and outsourcing—are reducing the influence they have at their jobs and hurting their ability to maintain the quality of services, according to two studies. "The Professional and Technical Workforce: A New Frontier for Unions," a report by the AFL-CIO Department for Professional Employees (DPE), found that these economic forces "threaten to undermine their professional autonomy, working conditions, and dignity."

"Changes in corporate structure have professionals looking for a vehicle to protect their professional dignity, advance their training, and provide them with a voice in the workplace," says DPE

President Paul E. Almeida. "More and more, these professionals are looking for a union that will ensure these rights." Actors, artists, and other performers long have recognized the value of unions for professionals. During high-profile contract negotiations, Hollywood's best-known actors and actresses, such as Tom Hanks, have talked about the importance of their unions to them and to the thousands of professional entertainers who don't make six- or seven-figure salaries.

Professionals say it's getting harder to serve the best interests of their customers, clients, and patients—and they no longer can count on stable employment, secure benefits, regular pay increases, or upward job mobility, according to "Finding Their Voices: Professionals and Workplace Representation," by the Albert Shanker Institute, a nonprofit organization founded by union leaders and named after the former president of AFT.

"Professionals feel their ability to make decisions and exercise professional judgment is diminishing and they are frustrated with their reduced control," says Richard Hurd, professor of industrial and labor relations at Cornell University.

"The challenge for unions is to show that their role will be to bring these workers a voice and to show that the union will be under the professionals' control." As in any organizing campaign, says Hurd, the key to success is "to listen to the workers."

*Excerpted from: "Unions: A Professional Choice" by Lauren Lazarovici, AFL-CIO. Visit the Department for Professional Employees, AFL-CIO, [www.dpeaflcio.org](http://www.dpeaflcio.org), to learn more*

# MSEA ELECTION 2012

## Candidates for MSEA President

THREE-YEAR TERM • AUGUST 1, 2012–JULY 31, 2015

### What does the MSEA president do?

The MSEA president is the full-time leader of the association and serves as the chief spokesperson and representative. The president presides at all association meetings, appoints, with board of directors' approval, chairpersons and members of MSEA committees, and consults with the executive director on MSEA policies and programs. *Three-year term*



**Joseph Webb**

**School:** Suitland High School

**Position:** Teacher

**Local:** Prince George's County Educators' Association

**Member:** MSEA 12 years/NEA 40 years

**Association Position:** *Local:* Treasurer, Board of Directors. *MSEA:* RA delegate. *NEA:* RA delegate.

*"EDUCATION IS OUR HOPE FOR A BETTER TOMORROW."*

*When Dr. Joseph Webb accepted the nomination for MSEA President, he sallied forth upon a quixotic quest destined to reconstruct American education for the next quarter-century. Unlike the "establishment candidates" who perpetuate the "status quo", Dr. Webb exemplifies new nobility in leadership and a new sense of pride.*

*MSEA and NEA conventions are forums where this nationally recognized scholar, educator, poet, essayist, lecturer, parliamentarian, and raconteur clearly and passionately articulates the TRUTH – thereby endowing MSEA's electorate with legitimate justification for voting.*

*Dr. Joseph Webb invites all MSEA colleagues: "Let us link our hearts and minds together and relentlessly pursue/create this pristine 'BETTER TOMORROW' wherein the only acceptable standards are dedication to SERVICE, and commitment to EXCELLENCE."*

*"I shall help to shape this nation So every future generation Will have a land where all are free Of ignorance and poverty."*

...AGAPE...



**Betty Weller**

**Position:** Teacher/MSEA Vice President

**Local:** Kent County Teachers Association

**Member:** MSEA 36 years/NEA 36 years

**Association Position:** *Local:* President, vice president, Bargaining Team (chair). *MSEA:* Treasurer, vice president, MSTA/MSEA Board of Directors. *NEA:* National Council of State Education Associations.

*We, as educators, need to take charge of our profession. We need to be the voice for our students. We need to be a strong Association. We are, after all, the professionals.*

*I've spent over three decades teaching middle school, being a member and advocating for my colleagues as a local president, being your MSTA/MSEA treasurer and MSEA vice president.*

*For the past eighteen months, much of my time has been focused on education reform and the new evaluation framework. But the work is not finished. As your MSEA president, I will continue to represent all of you and I'll work to build strong local affiliates.*

*With your help, we, the practitioners, can produce the kind of education reform that is real, that is effective and that works for our students. I look forward to working with you to produce the kind of positive changes that really make a difference.*

# MSEA ELECTION 2012

## Candidates for MSEA Vice President

THREE-YEAR TERM • AUGUST 1, 2012–JULY 31, 2015

### What does the MSEA vice president do?

The MSEA vice president represents the president as needed and performs duties assigned by the president, such as representing members on statewide committees and task forces, or as directed by the MSEA bylaws. *Three-year term*



**Cheryl Bost**

**School:** Prettyboy Elementary School

**Position:** Teacher

**Local:** Teachers Association of Baltimore County

**Member:** MSEA 23 years/NEA 23 years

**Association Position:** *Local:* President, vice president, Membership Committee (chair). *MSEA:* Board of Directors, Membership Organizing Committee, Pension Committee (co-chair). *NEA:* RA delegate, Mid-Atlantic Leadership Conference delegate.

*Hello members. I am asking for your support as I run to serve as your next MSEA Vice President. I have successfully served eight years as President of the Teachers Association of Baltimore County and I am currently serving my fourth year on the MSEA Board.*

*I have worked on issues impacting members in my local and throughout the state. I'm anxious to continue to be a strong advocate for our members. Defense is not a strategy to address issues that impact our salaries, benefits, and public education. Let's form coalitions and make this great organization even stronger.*

*I want to be your voice and work with our next president to work effectively for all of our members. I appreciate your support and vote to elect me as your MSEA Vice President.*



**Lila Merenbloom**

**School:** Arbutus Middle School

**Position:** Education Support Professional

**Local:** Education Support Professionals of Baltimore County

**Member:** MSEA 11 years/NEA 11 years

**Association Position:** *Local:* Building representative, Board of Directors. *MSEA:* Membership Committee.

*I am on the ESPBC Board of directors. There is a real disconnect between what NEA promises and what MSEA delivers to the locals. Having graduated from Johns Hopkins University, I worked as a teacher and counselor for the State of Maryland; Cafeteria worker; and now Science/Library/Alternative Learning Center Para Educator.*

*I have experienced enough to understand and value all of our member's contributions. My goal is to get our members the salaries, benefits, working conditions and job security they deserve. Being a long time supporter of the NEA, MSEA, and ESPBC, I have earned the right to represent our profession as a steward of our children's future.*

*My name is Lila Merenbloom, and I'm here to help. Thank you.*

CONTINUED, NEXT PAGE

## Candidates for MSEA Vice President

THREE-YEAR TERM • AUGUST 1, 2012–JULY 31, 2015

**What does the MSEA vice president do?** The MSEA vice president represents the president as needed and performs duties assigned by the president, such as representing members on statewide committees and task forces, or as directed by the MSEA bylaws. *Three-year term*



**Wanda Ruffo Twigg**

**Position:** Teacher

**Local:** Education Association of St. Mary's County

**Member:** MSEA 21 years/NEA 21 years

**Association Position:** *Local:* President, vice president, Negotiations Team. *MSEA:* Board of Directors, Pension Committee (co-chair), RA delegate. *NEA:* Board of Directors, NEA Mid-Atlantic Regional Committee (co-chair), RA delegate.

*Serving on both the NEA and MSEA Boards of Directors in addition to my two terms as Local President has prepared and provided me with the expertise to effectively lead MSEA as Vice President. My vast and varied Association experiences include Allegany, Baltimore, and St. Mary's County's where I have lived, learned and lead.*

*I bring a unique lens of understanding to the issues before us via membership and activism in AFSCME, TABCO, and EASMC. Leadership experiences at the national, state and local level, as well as working collaboratively with our Education Support Professionals on major initiatives, have allowed me to carry out our vision and mission.*

*I remain accessible, responsive and a strong, proven advocate on behalf of our members and the students of Maryland.*

*Vote Wanda Ruffo Twigg MSEA Vice President. Thank you.*

Check out MSEA's directory at [marylandeducators.org/board](http://marylandeducators.org/board) to learn more about MSEA's 16-member Board of Directors, including photos, terms, and contact information. For more information about the roles of officers and the board of directors, and MSEA elections, see MSEA's online handbook at [marylandeducators.org/membercenter](http://marylandeducators.org/membercenter).



## THE UNION DIFFERENCE: WORKERS' PAY IS HIGHER WHEN THEY'RE UNION

**The median weekly earnings of union workers are 28 percent higher than non-union workers.**

According to a January 2011 Bureau of Labor Statistics report, workers who belong to a union typically earn higher pay than non-union workers doing the same kind of job. Although it varies based on sector and occupation, the overall averages are striking.

- \$917 = Median weekly earnings in 2010 of union members.
- \$717 = Median weekly earnings in 2010 of non-union workers.

That's a yearly difference in salary of \$10,400 for union members vs. non-union members.

- Union members earn an average of \$4.95 more per hour, which equates to a yearly difference of \$10,300. The union difference for workers across the board is undeniable.

### For workers employed in the public sector

- The difference in salary amounts to roughly \$165 more a week—approximately \$650 more a month—for union vs. non-union.

### For workers employed in the private sector

- The salary difference for union vs. non-union amounts to roughly \$155 more a week—approximately \$615 more per month.

### Greater access to health care coverage

In 2009, 92 percent of union employees in the U.S. had access to health care benefits, compared to only 68 percent of non-union workers. The union advantage is even greater when you compare the percentages of union vs. non-union workers receiving specific benefits:

- *Dental Care:* Union 70% | Non-union 44%
- *Vision care:* Union 53% | Non-union 24%
- *Prescription drug benefits:* Union 90% | Non-union 68%

### Paid leave

- Union workers receive 28 percent more days of paid vacation, on average, than non-union workers.
- 82 percent of union workers have paid sick leave compared to 63 percent of nonunion workers.
- 46 percent of unionized workers receive full pay while on sick leave, versus only 29 percent of non-union workers.

### A more secure retirement

- Nationally, 77 percent of union employees in 2009 were covered by pension plans that provide a guaranteed monthly retirement income. Only 20 percent of non-union workers are covered by guaranteed (defined-benefit) pensions.
- Union workers are 53.9 percent more likely to have employer-provided pensions.

From *www.seiu.org* and research recently conducted by the Center for American Progress, the Bureau of Labor Statistics, UC Berkeley Labor Center, Labor Project for Working Families, the Center for Economic and Policy Research, and the Employee Benefits Research Institute.

# MSEA ELECTION 2012

## Candidates for MSEA Board of Directors

FOUR TO BE ELECTED • AUGUST 1, 2012–JULY 31, 2015

### What does an MSEA director do?

MSEA's Board of Directors is comprised of three officers (president, vice president, and treasurer), eight MSEA directors, four MSEA members of NEA's Board of Directors, and MSEA's executive director. The board is responsible for the fiscal affairs and general management of the association, the interpretation of policies, the preparation of the proposed two-year budget, and much more. Four directors will be elected in 2012. *Three-year term*



### Richard Benfer

**School:** Belvedere Elementary School

**Position:** Teacher

**Local:** Teachers Association of Anne Arundel County

**Member:** MSEA 19 years/  
NEA 19 years

**Association Position:**

*Local:* Vice president, Board of Directors.  
*MSEA:* C.A.R.E. (trainer), I Can Do It! (trainer).

*NEA:* RA delegate, GLBT Caucus, National Council of Urban Education Associations Caucus.

*I have worked for 19 years in Anne Arundel County and taught 2nd through 5th grades. I work tirelessly to encourage students and teachers. I advocated an increase interest in instructional professional development opportunities within my local (TAAAC). I have represented educators on our local bargaining team, government relations, and many other committees. I completed training through Emerging Leaders Generation VI. I am an MSEA IPD trainer for C.A.R.E. and I Can Do It.*

*I am an activist for you. I'll work on your behalf on the state level to overturn flawed pension legislation, to push back plans to complicate teacher evaluation systems, and to advocate for workload relief for all teachers and education support professionals. I will apply the leadership skills I have gained to build consensus around the issues and bring about changes that will benefit all members.*

*Richard Benfer will work hard for "Richer Benefits" for all.*



### Joe Coughlin

**Worksite:** Technology Support Services

**Position:** Education Support Professional/  
Local Association President

**Local:** Education Support Professionals of Baltimore County

**Member:** MSEA 12 years/  
NEA 12 years

**Association Position:**

*Local:* President, Board of Directors, Negotiations

*Committee. MSEA:* Budget Committee, ESP Concerns Workgroup (co-chair), State Contacts Committee.

*I have lobbied our legislators in Annapolis regarding job security, maintaining health and pension benefits, and improvements in the funding level for public education.*

*I regularly attend the monthly MSEA Board of Directors meetings where I have gained a deeper insight into the responsibilities of the Board and how it acts for the benefit of our membership.*

*As a graduate of the Emerging Leaders Academy V, I want to use what I've learned, and my experience, to tackle the many challenges that are facing us such as: Race to the Top, the living wage issue affecting ESPs, unmanageable workloads and class sizes, outsourcing, proposed shifting of pension funding, and job security for each and every one of our members.*

*I am asking for your vote, to be your advocate, to fight these issues facing us today. Please vote Joe Coughlin, for MSEA Board of Directors.*

*Thank you for your support.*

CONTINUED, NEXT PAGE

# MSEA ELECTION 2012

## Candidates for MSEA Board of Directors

FOUR TO BE ELECTED • AUGUST 1, 2012–JULY 31, 2015

### What does an MSEA director do?

MSEA's Board of Directors is comprised of three officers (president, vice president, and treasurer), eight MSEA directors, four MSEA members of NEA's Board of Directors, and MSEA's executive director. The board is responsible for the fiscal affairs and general management of the association, the interpretation of policies, the preparation of the proposed two-year budget, and much more. Four directors will be elected in 2012. *Three-year term*



### Theresa Mitchell Dudley

**School:** Benjamin Tasker Middle School

**Position:** Teacher

**Local:** Prince George's County Educators' Association

**Member:** MSEA 14 years

**Association Position:**

*Local:* Board of Directors, Membership Committee, Legislative Committees.  
*MSEA:* Board of Directors, RA delegate, Pension Task Force.

*NEA:* English Language Learners (national trainer).

*I'm excited to have been elected to the Board of Directors at the MSEA Convention. Re-electing me to serve a full term gives you a voice that demands respect for all educators.*



### Kenneth B. Haines

**Position:** Local Association President

**Local:** Prince George's County Educators' Association

**Member:** MSEA 24 years/  
NEA 24 years

**Association Position:**

*Local:* President. *MSEA:* Fund for Children and Public Education Steering Committee, Resolutions Committee. *NEA:* Resolutions Committee.

*If jobs in public education are such enviable posts to acquire, why do*

*the majority of those who become teachers depart the profession within five years? To paraphrase James Carville, it's the workload, stupid!*

*While the opponents of public education continue to describe the benefits of public educators as too generous and their lifestyles as lavish, educators continue to work nearly double the hours for which they receive compensation with the added joy of a part-time job to make ends meet.*

*continued, next column*

*Therefore, my new life's ambition is to eliminate one phrase from the Annotated Code of Maryland: "6-510: b (3) A public school employer may not negotiate... the maximum number of students assigned to a class..." Let us unite around one concept and stop pretending that teachers with forty students can be held accountable for not attaining the same results as teachers with seventeen. Class size is a working condition.*



### Veronica Henderson

**School:** Office of School Counseling

**Position:** Education Support Professional

**Local:** Education Support Professionals of Baltimore County

**Member:** MSEA 21 years/  
NEA 21 years

**Association Position:**

*Local:* Secretary (current), vice president (former), first editor of the newsletter. *MSEA:* Board of Directors, Minority Affairs

*Committee, Resolutions Committee. NEA: Board of Directors, Resolutions Committee, Women's Leadership Training Program (cadre trainer).*

*Osio! If only the strong survive then public educators are Olympic Triathlon ready! We are being asked to "Race to the Top" with "No Child Left Behind" and still make "Annual Yearly Progress"! We are being "Bullied and Harassed" into thinking we are not "Closing the Achievement Gap."*

*Those responsible for these initiatives and mandates should try running a race, carrying every child they are responsible for, and who function at different competency levels, across the AYP finish line!!! Someone needs to tell our story and I volunteer for the assignment. 'Mashed potatoes don't complain because all the starch has been beaten out of them!'*

*I am a voice for the voiceless! Elect Veronica Henderson to be your voice and advocate on the MSEA Board.*

CONTINUED, NEXT PAGE

# MSEA ELECTION 2012

## Candidates for MSEA Board of Directors

FOUR TO BE ELECTED • AUGUST 1, 2012–JULY 31, 2015

### What does an MSEA director do?

MSEA's Board of Directors is comprised of three officers (president, vice president, and treasurer), eight MSEA directors, four MSEA members of NEA's Board of Directors, and MSEA's executive director. The board is responsible for the fiscal affairs and general management of the association, the interpretation of policies, the preparation of the proposed two-year budget, and much more. Four directors will be elected in 2012. *Three-year term*



### Lori J. Hrinko

**School:** North East Middle School

**Position:** Teacher/Local Association President

**Local:** Cecil County Classroom Teachers Association

**Member:** MSEA 15 years/  
NEA 17 years

**Association Position:** *Local:* President, Negotiations Team, Membership (chair). *MSEA:* Pension Committee, NEA Convention Constitution (co-chair), Bylaws and Rules Committee. *NEA:* RA delegate.

*I am proud to be a teacher. I am committed to working to provide the best education and opportunities for all of our students in all of our public schools. That means attracting and retaining high quality dedicated teachers and staff to our schools. Adequate salaries, benefits, and a safe working environment are essential to maintaining our workforce.*

*We need the resources to maintain our schools and provide instruction to meet the needs our students. This requires dedication not just in the classroom, but at the state and national level too.*

*My experience as a local president and my participation on statewide committees has given me the foundation and experiences I need to help make a difference on a larger scale. I ask for your vote so that I can help to bring the positive changes that we need to support and promote our students, our staff and public education.*



### Trevor A. Liburd

**Worksite:** Pupil Personnel Services

**Position:** Pupil Personnel Worker

**Local:** Montgomery County Education Association

**Member:** MSEA 16 years/  
NEA 16 years

**Association Position:** *Local:* Building representative, Board of Directors, High School Council for Teaching and Learning. *MSEA:* RA delegate. *NEA:* RA delegate.

*As educators, we are facing daunting challenges with the economy, school funding, the loss of educator jobs and the constant political battles and degrading of our profession. The lack of funding has become a national issue with significant effects on state programs for our students, compensation for our educators, and loss of educator jobs. Due to threats to our union values, it is important that we stand strong to make the education of our students, jobs for our educators, and funding for public education a priority.*

*I ask for your support and vote for MSEA Board of Directors. If elected, I will work on your behalf in protecting our profession. Maryland has advanced the cause of education but with great sacrifice from our members. We must protect school funding on the state and local level. By working together, we can advance our cause for quality public education throughout Maryland.*

CONTINUED, NEXT PAGE

### SPECIAL NOTICE

FASSÉ • HCEA (Howard)

**VOTE ONLINE!** If you're a member of the Frederick Association of School Support Employees (FASSÉ) or the Howard County Education Association (HCEA), you'll use MSEA's Online Voting System for MSEA's 2012 Election.

**It's easy!** All you need is internet access, your MSEA membership number found on the mailing label of this issue of *ActionLine*, and the last four digits of your Social Security number. Visit [www.marylandeducators.org/mseaelection2012](http://www.marylandeducators.org/mseaelection2012) or look for the "Vote Here" button on the homepage at [www.marylandeducators.org](http://www.marylandeducators.org).

**Don't forget!** Vote online anytime January 23–February 24. Online voting closes February 24 at 5 p.m.!

Your membership number

#### \*\*\*\*\*ECLLOT\*\*C001

Your Name  
555 Anywhere Drive  
Your Town, MD 00000-0000

0005754188

# MSEA ELECTION 2012

## Candidates for MSEA Board of Directors

FOUR TO BE ELECTED • AUGUST 1, 2012–JULY 31, 2015

### What does an MSEA director do?

MSEA's Board of Directors is comprised of three officers (president, vice president, and treasurer), eight MSEA directors, four MSEA members of NEA's Board of Directors, and MSEA's executive director. The board is responsible for the fiscal affairs and general management of the association, the interpretation of policies, the preparation of the proposed two-year budget, and much more. Four directors will be elected in 2012. *Three-year term*



### Debbie Schaefer

**School:** Severna Park Middle School

**Position:** Education Support Professional

**Local:** Secretaries and Assistants Association of Anne Arundel County

**Member:** MSEA 18 years/  
NEA 18 years

**Association Position:** *Local:* President, vice president, Board of Directors. *MSEA:* ESP Concerns Workgroup.

*Hello, my name is Debbie Schaefer and I am running for the MSEA Board of Directors. I am currently the President of the Secretaries and Assistants Association of Anne Arundel County (SAAAAC). I have served in this capacity for the past five years. With hard work, SAAAAC has increased its membership from 480 to over 1000 members. By building our membership, we have seen an increase in power and strength which in turn has given us a greater voice in advocating for our members working conditions and protecting their rights.*

*I am a member of the MSEA ESP Concerns Workgroup and a member of the Governor's TELL Survey Committee for ESPs. I am asking you for your support and your vote, let's continue to improve MSEA and keep Maryland Public Education number "1".*



### Linda Shackelford

**School:** Accokeek Academy

**Position:** Teacher

**Local:** Prince George's County Educators' Association

**Member:** MSEA 15 years/  
NEA 15 years

**Association Position:** *Local:* Building representative. *MSEA:* RA delegate (4 years). *NEA:* RA delegate. (3 years).

*Hello, my name is Linda Shackelford and I am asking you to elect me to the MSEA Board*

*of Directors. I have been in education for the past 15 years and I do not like the changes that I have seen. With pay cuts, furloughs, job loss, and changes in our pensions, I am not a happy camper.*

*I want to be our voice and stand up and fight for what's right for us as Educators. WE deserve better than this. I am tired of being asked to give and give but not be compensated for what I'm giving. So vote for me and we will take this stand together.*

## MAKE A DIFFERENCE! VOTE!

### Important Election Dates

**January 25, 2012**

Deadline for ballots to arrive in schools

**February 24, 2012 5 p.m.**

Deadline for receipt of ballots

**March 9, 2012**

Election results validated at MSEA

# MSEA ELECTION 2012

## Candidates for NEA Board of Directors

ONE TO BE ELECTED • SEPTEMBER 1, 2012–AUGUST 31, 2015

### What does an NEA director do?

NEA's Board of Directors consists of at least one director from each state affiliate, plus an additional one for every 20,000 active members. With 70,000 members, MSEA has four NEA directors. NEA directors are also members of MSEA's Board of Directors. *Three-year term*



### Yvonne N. Baicich

**School:** Kingsford Elementary School

**Position:** Teacher

**Local:** Prince George's County Educators' Association

**Member:** MSEA 23 years/  
NEA 23 years

**Association Position:** *Local:* Board of Directors, committee chair, building representative. *MSEA:* Board of Directors, committee member, RA delegate. *NEA:* RA delegate.

*Educators in America are facing a hostile political climate as seen in such crucial places as Ohio and Wisconsin. Even in Maryland where public employees have fared pretty well due to previously friendly elected officials, we have seen the legislature punish us and limit our future security. Continuing policies that have worked in the past will not necessarily continue to benefit us, as we have witnessed recently with the Pension debacle, and I'm sure more is to follow.*

*Since our legislators are not willing to force wealthy Marylanders to pay their fair share of taxes, the legislators will continue to try to balance the budget on our backs. This is a time for our MSEA and NEA leadership to step up with bold action and ideas. We must both stand up for ourselves and form new alliances. You can count on me to work to do just that.*



### Elizabeth Barnes Brown

**Position:** Teacher/Local Association President

**Local:** Education Association of Charles County

**Member:** MSEA 32 years/  
NEA 32 years

**Association Position:** *Local:* President, vice president, secretary. *MSEA:* RA delegate, Human and Civil Rights Committee (chair). *NEA:* RA delegate, Budget Committee, Resolutions Committee.

*I believe that the focus of NEA should be kept on improving public education and protecting working conditions/benefits for education employees.*



### Michael Davis

**School:** Atholton High School

**Position:** Education Support Professional

**Local:** Howard County Education Association

**Member:** MSEA 6 years/  
NEA 6 years

**Association Position:** MSEA: RA delegate.

*My name is Michael Davis, and I am running for NEA Director. I am a Para-educator in*

*Howard County Public Schools and believe strongly in education and encouraging school employees to continue their education in order to grow and achieve in their profession. I believe strongly in creating a more equitable environment for all school employees where everyone is treated fairly and share the work.*

*I want all employees to feel that they have equal representation and a strong voice to advocate for equal opportunities to be able to go back to school and take advantage of opportunities to further their careers. I am committed to helping and serving my colleagues in education so that they can accomplish their goals professionally and personally.*

**MAKE A  
DIFFERENCE!  
VOTE!**

CONTINUED, NEXT PAGE

# MSEA ELECTION 2012

## Candidates for NEA Board of Directors

**ONE TO BE ELECTED**  
**SEPTEMBER 1, 2012–AUGUST 31, 2015**

### What does an NEA director do?

NEA's Board of Directors consists of at least one director from each state affiliate, plus an additional one for every 20,000 active members. With 70,000 members, MSEA has four NEA directors. NEA directors are also members of MSEA's Board of Directors. *Three-year term*

### Karen Myers

**School:** White Marsh Elementary School

**Position:** Teacher

**Local:** Education Association of St. Mary's County

**Member:** MSEA 13 years/NEA 13 years

**Association Position:** *Local:* Board of Directors. *MSEA:* Building representative, RA delegate. *NEA:* RA delegate.

*I have served on the Membership Committee, Negotiations Committee, as a Board Member, and a Building Representative in my Local for the past 14 years.*

*I am well prepared to represent my colleagues for the state of Maryland as the NEA Director. I am a leader, who is intelligent, dependable, and open-minded to new ideas. I am ready, willing and able to serve and represent you as we move forward in these difficult times. Thanks in advance for your support.*

(No photo provided)

## MAKE A DIFFERENCE! VOTE!

### Important Election Dates

**January 25, 2012**

Deadline for ballots to arrive in schools

**February 24, 2012 5 p.m.**

Deadline for receipt of ballots

**March 9, 2012**

Election results validated at MSEA

Check out MSEA's directory at [marylandeducators.org/board](http://marylandeducators.org/board) to learn more about MSEA's 16-member Board of Directors, including photos, terms, and contact information. For more information about the roles of officers and the board of directors, and MSEA elections, see MSEA's online handbook at [marylandeducators.org/membercenter](http://marylandeducators.org/membercenter).



## Local Affiliate Acronyms

Use this list to determine the county and local affiliate of each candidate.

### Allegany

**ACESC** Allegany County Educational Services Council

**ACTA** Allegany County Teachers Association

**APSASAC** Association of Public School Administrators and Supervisors of Allegany County

### Anne Arundel

**SAAAAC** Secretaries and Assistants Association of Anne Arundel County

**TAAAC** Teachers Association of Anne Arundel County

### Baltimore

**ESPBC** Education Support Professionals of Baltimore County

**TABCO** Teachers Association of Baltimore County

### Calvert

**CAESS** Calvert Association of Educational Support Staff

**CEA** Calvert Education Association

### Caroline

**CCEA** Caroline County Educators' Association

### Carroll

**CASE** Carroll Association of School Employees

**CCEA** Carroll County Education Association

### Cecil

**CCCTA** Cecil County Classroom Teachers Association

**CESPA** Cecil Education Support Personnel Association

### Charles

**EACC** Education Association of Charles County

### Dorchester

**DE** Dorchester Educators

### Frederick

**FASSE** Frederick Association of School Support Employees

**FCASA** Frederick County Administrators and Supervisors Association

**FCTA** Frederick County Teachers Association

### Garrett

**GCEA** Garrett County Education Association

### Harford

**HCEA** Harford County Education Association

**HCESC** Harford County Educational Services Council

### Howard

**HCEA** Howard County Education Association

### Kent

**KCESPA** Kent County Education Support Professionals Association

**KCTA** Kent County Teachers Association

### Montgomery

**MCEA** Montgomery County Education Association

### Prince George's

**ACE-AFSCME**

Local 2250 Association of Classified Employees

**PGCEA** Prince George's County Educators' Association

### Queen Anne's

**QACEA** Queen Anne's County Education Association

### St. Mary's

**CEASMC** Collective Education Association of St. Mary's County

**EASMC** Education Association of St. Mary's County

### Somerset

**SEA** Somerset Education Association

### Talbot

**TCEA** Talbot County Education Association

### Washington

**WCESP** Washington County Educational Support Personnel

**WCTA** Washington County Teachers Association

### Wicomico

**WCEA** Wicomico County Education Association

### Worcester

**WCESPA** Worcester County Education Support Personnel Association

**WCTA** Worcester County Teachers Association

# MSEA ELECTION 2012

## Candidates for MSEA Delegate to the NEA Representative Assembly and Convention

WASHINGTON, D.C. • JUNE 30–JULY 5, 2012

### What does an MSEA delegate to the NEA Representative Assembly do?

Every year, MSEA members elect nearly 70 of their colleagues to represent MSEA as delegates to the annual NEA Representative Assembly (RA). These state delegates, plus delegates elected by each of MSEA's 38 local associations, comprise the MSEA delegation to the RA. This year, more than 9,000 NEA delegates from across the country will gather June 30-July 5 in Washington, D.C. Over the course of eight business sessions, they will debate the vital issues that impact American public education and set association policy and activities for the year ahead.

#### Deborah Abdo-D'Ambrosio

**School:** Cora L. Rice ES

**Position:** Teacher

**Local:** PGCEA

**Member:** MSEA 4 years/NEA 4 years

**Association Position:** Local: RA delegate.

*As an MSEA Delegate to the 2012 NEA Convention, I will be punctual, diligent, and conscientious in the performance of my duties.*



*As an Emerging Leader, Generation VI, I will advocate for you at NEA. I would be honored to represent your interests at the NEA convention.*

#### Michele Bennett

**School:** Northeast ES

**Position:** Education Support Professional

**Local:** ACESC

**Member:** MSEA 7 years/NEA 7 years

**Association Position:** Local: Building representative, treasurer, president. MSEA: RA delegate, Emerging Leader. NEA: RA delegate.

*If you chose me to represent you at the NEA assembly, I will conduct myself with professionalism, while searching for solutions to helping us all!*



*LEP advocate. Collaborated on NBI that was adopted 2011: NEA believes Limited English Proficient students demonstrate advanced level of English before taking high stakes tests.*

#### Elizabeth Barnes Brown

**Position:** Teacher/Local Association President

**Local:** EACC

**Member:** MSEA 32 years/NEA 32 years

**Association Position:** Local: President, vice president, secretary. MSEA: RA delegate, Human and Civil Rights Committee (chair). NEA: RA delegate, Budget Committee, Resolutions Committee.

*I believe that the focus of NEA should be kept on improving public education and protecting working conditions/benefits for education employees.*



#### Christina Abrams

**School:** Crestwood MS

**Position:** Teacher

**Local:** FCTA

**Member:** MSEA 5 years/NEA 5 years

**Association Position:** Local: Building representative. MSEA: RA delegate. NEA: RA delegate.

*Through my involvement in my local Association, I have become a stronger teacher and leader who represents and advocates for all educators.*



#### Martha George Boxley

**School:** Bladensburg HS

**Position:** Teacher

**Local:** PGCEA

**Member:** MSEA 8 years/NEA 8 years

**Association Position:** Local: Fund for Children and Public Education. MSEA: RA delegate. NEA: RA delegate.

*After serving as a NEA delegate for eight years, I have gained experience to adequately represent you at the 2012 NEA Convention.*



#### Sally Buser

**School:** Allegany HS

**Position:** Teacher

**Local:** ACTA

**Member:** MSEA 30 years/NEA 30 years

**Association Position:** Local: Board of Directors, building representative.

*As an active MSEA member who has attended several NEA Conventions, I would be pleased and honored to represent my colleagues in DC in 2012.*



#### Yvonne N. Baicich

**School:** Kingsford ES

**Position:** Teacher

**Local:** PGCEA

**Member:** MSEA 23 years/NEA 23 years

**Association Position:** Local: Board of Directors, building representative, committee chair. MSEA: RA delegate, Board of Directors, committee member. NEA: RA delegate.

*I will be honored to represent Maryland educators to the NEA Convention. You know I will fight for your rights, your needs, and your future.*



#### Howard Brent

**School:** Benjamin Tasker MS

**Position:** Teacher

**Local:** PGCEA

**Member:** MSEA 8 years/NEA 15 years

**Association Position:** Local: Building representative.

*Please elect me as a state delegate in order to represent the state of Maryland at the National Convention. I'm ready to serve!*



#### Randy Changuris

**School:** Seneca Valley HS

**Position:** Substitute Teacher

**Local:** MCEA

**Member:** MSEA 37 years/NEA 37 years

**Association Position:** Local: Building representative, Board of Directors, Bargaining Team. MSEA: Task Force on Pension Enhancements, Coordinated Bargaining Council, RA delegate. NEA: RA delegate.

*I have been an advocate for our profession in many leadership roles. I wish to continue my advocacy as a strong voice for our profession.*



#### A. Gregory Beard

**Position:** Teacher

**Local:** PGCEA

**Member:** MSEA 20 years/NEA 30 years

**Association Position:** Local: Bylaws Committee, parliamentarian. MSEA: Government Relations. NEA: Resolutions Committee.

*Teachers are under attack. Education is under attack. Our financial future is under attack. Those who have fought before and won, should lead this fight.*



#### Alice D. Brooks

**Worksite:** Board of Education

**Position:** Bus assistant

**Local:** CAESS

**Member:** MSEA 4 years/NEA 4 years

**Association Position:** Local: RA delegate (2 years), building representative (2 years).

*Hello, I am Alice Brooks, and I enjoy staying on top of issues that affect public education—students, staff and schools.*



#### Glenda Cole-Bobo

**School:** Brookhaven ES

**Position:** Teacher

**Local:** MCEA

**Member:** MSEA 11 years/NEA 11 years

**Association Position:** Local: RA delegate (8 years). NEA: RA delegate (8 years).

*Special Education Teacher: 11 years; MCEA Representative: 8 years (NEA) Experience; Diversity Committee, PTA representative, Step Team Coach: 9 years, Co-chair PTA events.*



#### Richard Benfer

**School:** Belvedere ES

**Position:** Teacher

**Local:** TAAAC

**Member:** MSEA 19 years/NEA 19 years

**Association Position:** Local: Vice president, Board of Directors. MSEA: C.A.R.E. (cadre trainer), I Can Do It! (cadre trainer), Emerging Leader Generation VI. NEA: RA delegate, GLBT Caucus, National Council of Urban Educators Association caucus.



#### Michelle Brooks

**School:** Francis Scott Key MS

**Position:** ESOL Resource Teacher

**Local:** MCEA

**Member:** MSEA 9 years/NEA 9 years



*continued, next column*

*continued, next column*

# MSEA ELECTION 2012

## Candidates for MSEA Delegate to the NEA Representative Assembly and Convention

WASHINGTON, D.C. • JUNE 30–JULY 5, 2012

### Erin Connors

**School:** Wheaton Woods ES

**Position:** Teacher

**Local:** MCEA

**Member:** MSEA 7 years/NEA 7 years



*I am in my 7th year of teaching; Master's Degree in School Leadership; and I want to be a part of education reform.*

### Joe Coughlin

**Worksite:** Technology Support Services

**Position:** Education Support  
Professional/Local  
Association President

**Local:** ESPBC

**Member:** MSEA 12 years/NEA 12 years



**Association Position:** *Local:* President, Board of Directors, Negotiations Committee. *MSEA:* Budget Committee, ESP Concerns Workgroup (co-chair), State Contacts Committee.

*I would like to be an advocate for our members and represent Maryland's interests at the NEA Convention. Thanks for the opportunity to serve you.*

### Barrett Cross

**School:** Mountain Ridge HS

**Position:** Special Education Teacher

**Local:** ACTA

**Member:** MSEA 33 years/NEA 33 years



**Association Position:** *Local:* Building representative, Board of Directors. *MSEA:* Nominations and Credentials Committee, Convention Arrangements Committee-Special Activities (chair). *NEA:* RA Elections Committee Monitor.

*As a special educator, I know the issues that all teachers face. We must repair our broken system! Our students deserve it!*

### Rita Cross

**School:** Washington MS

**Position:** Teacher

**Local:** ACTA

**Member:** MSEA 31 years/NEA 34 years



*MSEA:* MSEA Convention Arrangements Committee (chair). *NEA:* RA Elections Committee Monitor.

*Regardless of the subjects we teach, we understand there are educational issues that must be fixed. I will be your NEA Convention "common sense" vote!*

### Jill Davis

**School:** Berry ES

**Position:** Teacher

**Local:** EACC

**Member:** MSEA 8 years/NEA 8 years



**Association Position:** *Local:* Executive Board of Directors. *MSEA:* Leadership Training Retreat Committee.

*MSEA delegate 2011, 2009, 2008, 2007, 2006. NEA delegate 2011, 2009, 2008. LTR Committee member since 2009. Emerging Leader Generation 5.*

### Michael A. Davis

**School:** Atholten HS

**Position:** ESP

**Local:** HCEA (Howard)

**Member:** MSEA 6 years/NEA 6 years



**Association Position:** *MSEA:* RA delegate.

*I am running as a MSEA Delegate to the NEA because I am called to serve people and to provide for the growth of every life I encounter.*

### Liz Dodson

**School:** George T. Cromwell ES

**Position:** Learning Lab,  
Behavioral Assistant

**Local:** SAAAAC

**Member:** MSEA 18 years/NEA 18 years



**Association Position:** *Local:* Board of Directors (SAAAAC).

*I'm a loyal team member serving on the board of directors of SAAAAC. As a longstanding union member I'm dedicated, responsible, dependable, punctual, and flexible.*

### Kihara Monique Dorsey

**School:** Kingsview MS

**Position:** Teacher

**Local:** MCEA

**Member:** MSEA 12 years/NEA 12 years



**Association Position:** *Local:* Board of Directors, Council on Teaching and Learning (chair), Multicultural Affairs Committee. *MSEA:* RA delegate. *NEA:* RA delegate.

*As a mentor teacher, I have the unique perspective of advocating and ensuring that all teachers have appropriate resources to be successful. Emerging Leader VII.*

### Theresa Mitchell Dudley

**School:** Benjamin Tasker MS

**Position:** Teacher

**Local:** PGCEA

**Member:** MSEA 14 years



**Association Position:** *Local:* Local: Board of Directors, Membership Committee, Legislative Committees. *MSEA:* Board of Directors, RA delegate, Pension Task Force. *NEA:* English Language Learners (national trainer).

*I have enjoyed serving and will continue to serve with your support. I have served as an MSEA delegate twice.*

### Charles Eberly

**School:** Braddock MS

**Position:** Teacher

**Local:** ACTA

**Member:** MSEA 33 years/NEA 33 years



**Association Position:** *Local:* Building representative (2 years). *MSEA:* RA delegate (2 years). *NEA:* RA delegate (2 years).

*Teachers need to know what is affecting their profession. Getting information back to my colleagues from the state and national conventions is important to me.*

### Jerome M. Edwards

**School:** Williamsport HS

**Position:** Teacher

**Local:** WCTA (Washington)

**Member:** MSEA 15 years/NEA 15 years



**Association Position:** *Local:* Minority Committee delegate. *MSEA:* RA delegate. *NEA:* RA delegate.

*I believe all children can learn and deserve excellent schools.*

### Lauri S. Edwards

**School:** Maugansville ES

**Position:** Teacher

**Local:** WCTA (Washington)

**Member:** MSEA 5 years/NEA 5 years



**Association Position:** *Local:* Building representative, Membership Committee.

*Great public schools are important for the economic future.*

### Mavis Ellis

**School:** Springbrook HS

**Position:** Pupil Personnel Worker

**Local:** MCEA

**Member:** MSEA 20 years/NEA 20 years



**Association Position:** *Local:* Board of Directors, building representative, NEA RA delegate. *MSEA:* Board of Directors, Human and Civil Rights Committee (chair), RA delegate. *NEA:* Board of Directors, Resolutions Committee, Project Graduation Advisory Committee.

*My goal is to continue to connect with the MSEA membership statewide to meet the challenges we face at the local, state and national levels.*

### Indira Ennis

**School:** Capitol Heights ES

**Position:** Teacher

**Local:** PGCEA

**Member:** MSEA 5 years/NEA 5 years



**Association Position:** *Local:* Building representative.

*I ask for your support to the 2012 NEA Convention. As a delegate I will support the views and position of the MSEA.*

### Mary Fenton

**School:** J.C. Parks ES

**Position:** Teacher

**Local:** EACC

**Member:** MSEA 30 years/NEA 30 years



**Association Position:** *Local:* Building representative, Executive Board. *MSEA:* RA delegate. *NEA:* RA delegate.

*Thank you for the opportunity to help represent Maryland. I hope to have the privilege to serve you this year in our nation's capital!*

# MSEA ELECTION 2012

## Candidates for MSEA Delegate to the NEA Representative Assembly and Convention

WASHINGTON, D.C. • JUNE 30–JULY 5, 2012

### Jessica Fitzwater

**School:** Oakdale ES

**Position:** Teacher

**Local:** FCTA

**Member:** MSEA 7 years/NEA 7 years

**Association Position:** Local: Board of Directors, building representative. MSEA: RA delegate, New Business Item Committee. NEA: RA delegate.

*I'm a hard worker, I have experience at the NEA RA, I'm not afraid to speak up, and I'm passionate about education. Standing strong!*



### Lauri Friedman

**School:** Damascus HS

**Position:** Computer Science/  
Technology Teacher

**Local:** MCEA

**Member:** MSEA 12 years/NEA 12 years

**Association Position:** Local: Board of Directors, Budget Committee, Political Action and Legislative Support Committee. MSEA: RA delegate. NEA: RA delegate.

*I would like to be your advocate aiding to improve our profession as to what you would like to see improved/changed in education.*



### Romulo F. Gabriel, Jr.

**School:** Henry E. Lackey HS

**Position:** Science Teacher

**Local:** EACC

**Member:** MSEA 1 year/NEA 1 year

**Association Position:** Local: Building representative.

*As an MSEA/NEA Delegate, I will do my best to represent your interests in the upcoming negotiations regarding our profession. Thank you.*



### Michele B. Green

**School:** Wood Acres ES

**Position:** Teacher

**Local:** MCEA

**Member:** MSEA 15 years/NEA 15 years

**Association Position:** Local: Treasurer, Political Action and Legislative Support Committee, Bargaining Team.

*I would love to be your advocate and voice. We can work to improve teaching and learning as well as reevaluate time and workload issues.*



### Debra "Debbie" Haan

**School:** Middleton ES

**Position:** Teacher

**Local:** EEAC

**Member:** MSEA 25 years/NEA 25 years

**Association Position:** Local: Building representative. MSEA: RA delegate. NEA: RA delegate.

*I will let your voice be heard. Please allow me to be that voice for you. Will you give me that chance?*



### Kenneth B. Haines

**Position:** Local Association President

**Local:** PGCEA

**Member:** MSEA 24 years/ NEA 24 years

**Association Position:** Local: President. MSEA: MSEA Fund for Children and Public Education Steering Committee, MSEA Resolutions Committee. NEA: NEA Resolutions Committee.

*Still trying, after all these years, to convince all members to donate to the Fund for Children, I look forward to seeing everyone in Washington.*



### Mildred Hamann

**Worksite:** Office of Student Support Services

**Position:** Education Support Professional

**Local:** ESPBC

**Member:** MSEA 7 years/NEA 7 years

**Association Position:** Local: Board of Directors, Communications and Publicity Committee (chair). MSEA: RA delegate. NEA: RA delegate.

*Elect me, Millie Hamann, to be an NEA delegate to advocate for students, educators, and the profession. I am not afraid to represent our members!*



### Bill Hay

**School:** Frederick Douglass HS

**Position:** Teacher/Coach

**Local:** PGCEA

**Member:** MSEA 34 years/NEA 34 years

**Association Position:** Local: Building representative (4 years). MSEA: RA delegate (6 years). NEA: RA delegate (2 years).

*It has been an honor to serve as a delegate to the State and National conventions and hope that I can continue to do so.*



### Charlene L. Haynie

**School:** Henry E. Lackey HS

**Position:** Teacher

**Local:** EACC

**Member:** MSEA 35 years/NEA 35 years

**Association Position:** Local: Building representative, Executive Board, recording secretary. MSEA: RA delegate, Nominations and Credentials Committee. NEA: RA Delegate, Resolutions Committee, Budget Committee.

*I have enjoyed representing your interests in the past and would like to do so again so please vote for Charlene L. Haynie, NEA Delegate.*



### James R. Henderson, III

**Worksite:** Office of Information Technology

**Position:** Education Support Professional

**Local:** ESPBC

**Member:** MSEA 6 years/NEA 6 years

**Association Position:** Local: ESPBC website designer, Communications and Publicity Committee. MSEA: Membership Committee, RA delegate, assisted MSEA with RA computer setup.



*Vote James Henderson for NEA Delegate! I am living proof that new members can make a positive difference for our associations if given a chance.*

### Veronica Henderson

**Worksite:** Office of School Counseling

**Position:** Education Support Professional

**Local:** ESPBC

**Member:** MSEA 21 years/NEA 21 years

**Association Position:** Local: Secretary (current), vice president (former), first editor of the newsletter. MSEA: Board of Directors, Minority Affairs Committee, Resolutions Committee. NEA: Board of Directors, Resolutions Committee, Women's Leadership Training Program (cadre trainer).

*Veronica Henderson – a voice for the voiceless, a passionate advocate, and one who always speaks out and up for our members. Elect Veronica Henderson!*



### Abby Hendrix

**School:** Francis Scott Key MS

**Position:** Teacher

**Local:** MCEA

**Member:** MSEA 15 years/NEA 15 years

**Association Position:** Local: Secretary, building representative, Political Action and Legislative Support Committee. MSEA: Resolutions Committee, Legislative Committee. NEA: Resolutions Committee.

*As an educator activist and representative, I make sure my voice is echoing the voices of others in my building, county, state, and nation.*



### John Hendrix

**School:** John F. Kennedy HS

**Position:** Teacher

**Local:** MCEA

**Member:** MSEA 15 years/NEA 15 years

**Association Position:** Local: Board of Directors, building representative, elected faculty representative. MSEA: RA delegate. NEA: RA delegate.

*As a Hispanic male teacher, I represent a need in education that is essential to reach out to the youth of tomorrow.*



### Troy Horsley

**School:** Francis Scott Key MS

**Position:** Reading Specialist

**Local:** MCEA

**Member:** MSEA 8 years/NEA 12 years

**Association Position:** Local: Minority Affairs Committee recording secretary. MSEA: Human and Civil Rights Committee, RA delegate, Emerging Leaders. NEA: RA delegate, Resolutions Committee, New Business Items Committee.

*I am a hard working educator that is willing to be a strong voice for local, state, and national level initiatives. Vote for Troy Horsley!*



continued, next column

# MSEA ELECTION 2012

## Candidates for MSEA Delegate to the NEA Representative Assembly and Convention

WASHINGTON, D.C. • JUNE 30–JULY 5, 2012

### Lori J. Hrinko

**School:** North East MS

**Position:** Teacher

**Local:** CCCTA

**Member:** MSEA 15 years/NEA 17 years

**Association Position:** *Local:* President, Negotiations Team, Membership Committee (chair). *MSEA:* Pension Committee, NEA Convention Constitution (co-chair), Bylaws and Rules Committee. *NEA:* RA delegate.

*I would like to continue to serve our state as a delegate and by supporting the delegation in any role I am asked to fulfill.*



### Allison M. Kyte

**School:** Mountain Ridge HS

**Position:** Teacher

**Local:** ACTA

**Member:** MSEA 4 years/NEA 4 years

**Association Position:** *Local:* Building representative, Board of Directors. *NEA:* RA delegate.

*I have taught 12 years. I am very active in MSEA and will represent you and robust public education and educators at the RA.*



### Russell C. Leone

**School:** Central ES

**Position:** Teacher

**Local:** TAAAC

**Member:** MSEA 12 years/NEA 12 years

**Association Position:** *Local:* Board of Directors, Nominating Committee (chair). *MSEA:* Leadership Training Retreat Committee.

*Thank you for allowing me to represent you over the last four years. I promise to stand up for students and educators again this year.*



### Hugo Jackson

**School:** Lime Kiln MS

**Position:** Teacher

**Local:** HCEA (Howard)

**Member:** MSEA 17 years/NEA 17 years

**Association Position:** *MSEA:* Minority Affairs Committee (co-chair).

*I would like to represent Maryland Educators in Washington, D.C. as we fight for educational rights, freedom, and most importantly our kids. Thank you!*



### Tawana R. Lane

**School:** Friendly HS

**Position:** English Teacher

**Local:** PGCEA

**Member:** MSEA 8 years/NEA 8 years

**Association Position:** *Local:* Future Teacher Committee (chair). *MSEA:* Resolutions Committee. *NEA:* Resolutions Committee.

*After serving as Resolutions co-chair, local NEA and MSEA Delegate, I am adequately prepared to represent my colleagues throughout the state of Maryland.*



### Trevor A. Liburd

**Worksite:** Pupil Personnel Services

**Position:** Pupil Personnel Worker

**Local:** MCEA

**Member:** MSEA 16 years/NEA 16 years

**Association Position:** *Local:* Building representative, Board of Directors, High School Council on Teaching and Learning representative. *MSEA:* RA delegate. *NEA:* RA delegate.

*It is important that we stand strong to make the education of our students, jobs for our educators, and funding for public education a priority.*



### Evelyn Joray

**School:** Sligo MS

**Position:** Pupil Personnel Worker

**Local:** MCEA

**Member:** MSEA 34 years/NEA 34 years

**Association Position:** *Local:* Building representative, Political Action and Legislative Support Committee. *MSEA:* RA delegate, Human and Civil Rights Committee. *NEA:* RA delegate.

*I am committed to utilizing my educational expertise and experiences to assure that every child has an opportunity to fulfill their education dreams.*



### Elizabeth Lazaro

**School:** Buck Lodge MS

**Position:** Teacher

**Local:** PGCEA

**Member:** MSEA 6 years/NEA 6 years

**Association Position:** *Local:* Minority Affairs Committee. *NEA:* RA delegate (2011).

*It's an honor to represent the state to the 2012 NEA Convention. I offer my time and talents to the service of the MSEA.*



### Timothy Lipscomb

**School:** Arbutus MS

**Position:** Education Support Professional

**Local:** ESPBC

**Member:** MSEA 6 years/NEA 6 years

**Association Position:** *Local:* Treasurer, Budget and Audit Committee (chair), Bylaws Committee. *MSEA:* Human and Civil Rights Committee, RA delegate. *NEA:* RA delegate.

*Vote Timothy Lipscomb for NEA Delegate. My goal is to serve the members of our association better, and to help retain and increase our membership.*



### Ebony Nicole Kelly

**School:** Sgt. Shriver ES

**Position:** ESOL Educator

**Local:** MCEA

**Member:** MSEA 13 years/NEA 13 years

**Association Position:** *Local:* Minority Affairs Committee, National Board Steering Committee.

*I'd like to be a State Delegate at the RA because I want to be a decision maker that helps affect change in education policy.*



### Felix Lazaro

**School:** Francis Scott Key ES

**Position:** Teacher

**Local:** PGCEA

**Member:** MSEA 3 years/NEA 3 years

**Association Position:** *Local:* Building representative, Minority Affairs Committee, Faculty Advisory Council. *NEA:* RA delegate (2011).

*As MSEA delegate to the 2012 NEA Convention, I shall endeavor to attend and actively participate in all required caucuses, meetings, and deliberative sessions.*



### Shirley May Little

**School:** Crofton MS

**Position:** Teacher

**Local:** TAAAC

**Member:** MSEA 37 years/NEA 37 years

**Association Position:** *Local:* Board of Directors. *MSEA:* RA delegate. *NEA:* RA delegate.

*My decades as teacher and member of NEA, MSEA, and TAAAC prepared me for Delegate responsibilities. I am devoted to improving my colleagues' professional environment.*



### Danielle L. King

**School:** Mayfield Woods MS

**Position:** Physical Education Teacher

**Local:** HCEA (Howard)

**Member:** MSEA 10 years/NEA 10 years

**Association Position:** *Local:* Secretary, Board of Directors, building representative. *MSEA:* RA delegate. *NEA:* RA delegate.

*I would like to use my leadership skills to be a voice for all educators at this year's NEA Convention.*



### Paul Lemle

**Position:** Teacher/Local Association President

**Local:** HCEA (Howard)

**Member:** MSEA 9 years/NEA 11 years

**Association Position:** *Local:* President, Government Relations Committee (chair).

*My NEA position is simple. Our #1 national ranking is not an accident – it results from full school funding and superhuman work by educators.*



### Charlie Mann

**School:** Calverton ES

**Position:** ESOL Specialist

**Local:** PGCEA

**Member:** MSEA 17 years/NEA 17 years

**Association Position:** *Local:* Building representative. *MSEA:* RA delegate (10 years). *NEA:* RA delegate (10 years).

*The NEA Convention is known as "The World's Largest Deliberative Assembly." I know I possess "the right stuff" to represent MSEA on this enormous stage.*



# MSEA ELECTION 2012

## Candidates for MSEA Delegate to the NEA Representative Assembly and Convention

WASHINGTON, D.C. • JUNE 30–JULY 5, 2012

### Linda McLaughlin

**School:** North Point HS

**Position:** Teacher

**Local:** EACC

**Member:** MSEA 6 years/NEA 23 years

**Association Position:** *Local:* Political Action Committee (chair), Executive Board. *MSEA:* RA delegate (2008, 2009, 2011). *NEA:* RA delegate (2011), New Business Item Committee.

*Currently local PAC chair and on Executive Board. Have been MSEA delegate, 2011 MSEA rep to NEA. Would like to serve again at NEA.*



### Erskine Moss

**School:** Patuxent HS

**Position:** Teacher

**Local:** CEA

**Member:** MSEA 8 years/NEA 29 years

**Association Position:** *Local:* Executive Board, Negotiations Committee. *MSEA:* Membership Committee, Convention Arrangements Committee, Special Education Task Force.

*I am dedicated to serving the Maryland members and helping to keep members informed. I would enjoy being your state delegate to the NEA conference.*



### Moshood Olayinka

**School:** Northwestern HS

**Position:** Teacher

**Local:** PGCEA

**Member:** MSEA 6 years/NEA 6 years

**Association Position:** *MSEA:* RA delegate (4 years).

*Dear Colleagues, I am asking for your support towards my candidacy as MSEA Delegate to the 2012 NEA Convention.*



### Joe S. McMahan

**School:** Dr. Gustavus Brown ES

**Position:** Teacher

**Local:** EACC

**Member:** MSEA 22 years/NEA 22 years

**Association Position:** *Local:* Vice president, secretary, Board of Directors. *MSEA:* RA delegate, Bylaws and Rules Committee, Governor's Task Force on Safe Schools. *NEA:* RA delegate, C.A.R.E. (cadre trainer).

*I would be honored to serve as your state delegate to make sure that your voice is heard in this ever-shifting world of education!*



### Alphea Myers-Uwode

**School:** Andrew Jackson Academy

**Position:** Teacher

**Local:** PGCEA

**Member:** MSEA 7 years/NEA 16 years

*As an MSEA Delegate to the 2012 NEA Convention, I shall endeavor to attend and actively participate in all required caucuses, meetings, and deliberative sessions.*



### Debbie Pappas

**Position:** Local Association President

**Local:** ACTA

**Member:** MSEA 34 years/NEA 34 years

**Association Position:** *Local:* President, vice president, Board of Directors. *MSEA:* West Coordinated Bargaining Council (facilitator). *NEA:* RA delegate (6 years).

*The annual NEA Convention is my opportunity to network with other members from across the country and become more aware of national issues facing education.*



### Stephanie Nelson-Butler

**School:** Suitland HS

**Position:** Teacher

**Local:** PGCEA

**Member:** MSEA 9 years/NEA 9 years

**Association Position:** *Local:* RA delegate. *MSEA:* RA delegate.

*MSEA State Delegates to the NEA Convention have a sacred duty to represent the entire state. If elected, I shall uphold that duty.*



### Cleo Parker

**School:** Southern MS

**Position:** Education Support Professional

**Local:** CAESS

**Member:** MSEA 33 years/NEA 33 years

**Association Position:** *Local:* Executive Board of Directors. *MSEA:* RA delegate (6 years), MSEA Summer Training Series (2 years), MSEA ESP Professional Development Day (3 years). *NEA:* ESP National Conference (3 years), RA delegate (1 year).

*I have represented my local at the MSEA Convention, and now I'm ready to be your voice at the NEA Convention.*



### Marguerite Matthews

**School:** Oxon Hill MS

**Position:** Teacher

**Local:** PGCEA

**Member:** MSEA 23 years/NEA 23 years

**Association Position:** *Local:* Building representative. *MSEA:* RA delegate. *NEA:* RA delegate.

*I am married with four children, two graduated and two enrolled in public schools. I understand the needs of a teacher, parent, and counselor.*



### Wanda Newman

**School:** Friendly HS

**Position:** Education Support Professional/Interpreter

**Local:** AFSCME

**Member:** MSEA 21 years/NEA 21 years

**Association Position:** *Local:* Vice president, Executive Board, chapter representative. *MSEA:* Minority Leadership Training (cadre trainer), Women's Leadership Training Program Committee (cadre trainer). *NEA:* ESP Mentoring Workgroup, Women's Leadership Training Program (cadre trainer).

*I am committed to addressing association issues and being responsive to the membership. Vote Wanda Newman, MSTA Delegate to the NEA RA.*



### Elizabeth Paul

**School:** Heather Ridge School

**Position:** Teacher

**Local:** FCTA

**Member:** MSEA 10 years/NEA 15 years

**Association Position:** *Local:* Board of Directors, Negotiations Team, Government Relations Committee.

*I want to ensure that our members' interests are represented. I want to forward the goals of MSEA nationally in these challenging times for education.*



### Lila Merenbloom

**School:** Arbutus MS

**Position:** Education Support Professional

**Local:** ESPBC

**Member:** MSEA 11 years/NEA 11 years

**Association Position:** *Local:* Building representative, Board of Directors. *MSEA:* Membership Committee.

*You can count on me to dutifully represent MSEA in the upcoming NEA Convention, while not treating it as a paid vacation.*



### Kelli Midgley

**School:** Wilde Lake HS

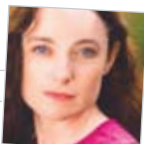
**Position:** Teacher

**Local:** HCEA (Howard)

**Member:** MSEA 19 years/NEA 19 years

**Association Position:** *Local:* Board of Directors.

*Kelli brings tenacity and experience to the HCEA Board of Directors. She has the character and skills to make a positive impact at NEA.*



### Lara North

**School:** Henry E. Lackey HS

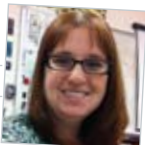
**Position:** Science Teacher

**Local:** EACC

**Member:** MSEA 3 years/NEA 3 years

**Association Position:** *Local:* Building representative. *MSEA:* RA delegate.

*Being a delegate at MSEA gave me a renewed sense of purpose. Please vote for me, Lara North, NEA Delegate. Thank you.*



### Jim Politis

**Position:** Substitute Teacher

**Local:** MCEA

**Member:** MSEA 42 years/NEA 42 years

**Association Position:** *Local:* Board of Directors, Negotiating Team, Leadership Development Committee (chair). *MSEA:* Board of Directors, Legislation and Citizenship Committee, Resolutions Committee. *NEA:* Constitutional Convention, Resolutions Committee, Code of Ethics Task Force.

*Having been a delegate to many NEA Conventions I know exactly what is expected and I will fulfill the responsibilities fully and well.*



# MSEA ELECTION 2012

## Candidates for MSEA Delegate to the NEA Representative Assembly and Convention

WASHINGTON, D.C. • JUNE 30–JULY 5, 2012

### Amity Pope

**School:** Charles Carroll MS

**Position:** Teacher

**Local:** PGCEA

**Member:** MSEA 10 years/NEA 10 years

**Association Position:** *Local:* Professional Development and Leadership Committee (trainer/current member), Faculty Advisory Council (2 years). *MSEA:* Emerging Leaders Generation VIII, Leadership Training Retreat Committee (current member).

*I would be honored to serve our members. I am not afraid to speak out and ask the tough questions.*



### Sandy Raymond

**Position:** Staff Development Teacher

**Local:** MCEA

**Member:** MSEA 30 years/NEA 30 years

**Association Position:** *Local:* Board of Directors (officer and member), Bargaining Team, Membership Committee (chair). *MSEA:* Membership Committee (chair), New Business Items (co-chair), Leadership Training Retreat/Salisbury State University (chair). *NEA:* Committee positions.

*If elected as Convention delegate, I look forward to serving you with the same honesty, indulgence, and fortitude as I have in past years.*



### Bill Reamy

**School:** McDonough HS

**Position:** Teacher

**Local:** EACC

**Member:** MSEA 16 years/NEA 16 years

**Association Position:** *Local:* Building representative. *MSEA:* RA delegate. *NEA:* RA delegate.

*Bill Reamy safe schools good salaries secure pensions fair evaluations reasonable class sizes for all Maryland schools student and parental accountability job security.*



### Kathy Reamy

**School:** Dr. James Craik ES

**Position:** Teacher (School Counselor)

**Local:** EACC

**Member:** MSEA 6 years/NEA 6 years

**Association Position:** *Local:* Building representative. *MSEA:* RA delegate. *NEA:* RA delegate.

*I enjoy serving as a voice for all members. Please vote for me as an MSEA Delegate to the NEA Representative Assembly.*



### Brandy Reazer

**School:** Northwood HS

**Position:** Teacher

**Local:** MCEA

**Member:** MSEA 10 years/NEA 10 years

**Association Position:** *Local:* Building representative. *MSEA:* Minority Affairs Committee.

*I am excited to be part of an association whose premise is quality education. I would like to continue this work by attending the RA.*



### John P. Reuschlein

**School:** Northeast ES

**Position:** Teacher

**Local:** ACTA

**Member:** MSEA 30+ years/NEA 30+ years

**Association Position:** *Local:* Treasurer, Board of Directors. *MSEA:* RA delegate. *NEA:* RA delegate.

*I will consider all issues and be an advocate for great public schools for all children.*



### Dionna Ricks

**School:** Jackson Road ES

**Position:** ESOL Teacher

**Local:** MCEA

**Member:** MSEA 19 years/NEA 19 years

**Association Position:** *Local:* Building representative, elected faculty representative, Minority Affairs Committee (chair). *MSEA:* Minority Affairs Committee, Emerging Leaders Generation VII. *NEA:* Minority Leadership Training Program (cadre trainer).

*Actively involved in OUR associations: Building Representative, Chair of MCEA's Minority Affairs Committee (MAC), MSEA MAC, MSEA Emerging Leaders Generation 7, NEA's MLTP Cadre.*



### Audrey E. Robinson

**School:** Crossland HS

**Position:** Teacher

**Local:** PGCEA

**Member:** MSEA 39 years/NEA 39 years

**Association Position:** *Local:* Social Committee, Minority Affairs Committee, Professional Leadership and Development Committee.

*Loving the education profession, I will continue to represent the interest of all Maryland educators and make decisions that will enrich teachers.*



### Joshua L. Rubin

**School:** Albert Einstein HS

**Position:** Teacher

**Local:** MCEA

**Member:** MSEA 4 years/NEA 4 years

**Association Position:** *MSEA:* RA delegate.

*If elected as an MSEA delegate to the NEA convention, I will work hard to be a voice for the students and teachers of Maryland.*



### Dave Russell

**School:** Georgian Forest ES

**Position:** Physical Education Teacher

**Local:** MCEA

**Member:** MSEA 16 years/NEA 16 years

**Association Position:** *Local:* Building representative. *MSEA:* RA delegate. *NEA:* RA delegate.

*I would like to represent Maryland at the NEA convention this year as we make important decisions that will help guide school reform.*



### Eustace L. Rutherford

**School:** Friendly HS

**Position:** Teacher

**Local:** PGCEA

**Member:** MSEA 16 years/NEA 16 years

**Association Position:** *Local:* Membership Committee. *MSEA:* RA delegate. *NEA:* RA delegate.

*MSEA state delegates to the NEA convention have a sacred duty to represent the entire state. If elected, I shall uphold this moral imperative.*



### Joan C. Sabree

**School:** Woodridge ES

**Position:** Teacher

**Local:** PGCEA

**Member:** MSEA 10 years/NEA 10 years

**Association Position:** *Local:* Membership Committee (chair). *MSEA:* Leadership Training Retreat Committee. *NEA:* RA delegate.

*As your representative, you can depend on me to vote on issues that will ensure a bright future for Maryland's educators and students.*



### Maxine Salah

**School:** Veterans ES

**Position:** Education Support Professional

**Local:** HCEA (Howard)

**Member:** MSEA 12 years/NEA 12 years

**Association Position:** *Local:* Membership Committee, building representative.

*13 years HCEA Member; 10 years building rep; 7 years NEA and MSTTA convention rep; Emerged Leader; Membership Committee. Still working hard to represent you.*



### Brenda A. Savoy

**School:** Patuxent HS

**Position:** Education Support Professional

**Local:** CAESS

**Member:** MSEA 6 years/NEA 6 years

**Association Position:** *Local:* Board of Directors, Membership Committee. *MSEA:* RA delegate, Summer Training Series, ESP Professional Development Day. *NEA:* ESP National Conference.

*I will work hard to make a difference for the members of MSEA.*



### Debbie Schaefer

**School:** Severna Park MS

**Position:** Education Support Professional

**Local:** SAAAAC

**Member:** MSEA 18 years/NEA 18 years

**Association Position:** *Local:* President, vice president, Board of Directors.

*Hello my name is Debbie Schaefer-ESP. I would like to represent all Maryland members to advocate for better working conditions and a living wage.*



# MSEA ELECTION 2012

## Candidates for MSEA Delegate to the NEA Representative Assembly and Convention

WASHINGTON, D.C. • JUNE 30–JULY 5, 2012

### Jacquelyn Bond Shropshire

**School:** M. Blair HS

**Position:** Teacher

**Local:** MCEA

**Member:** MSEA 35 years/NEA 35 years

**Association Position:** Local: Minority Affairs Committee. NEA: RA delegate (11 years).

*Uphold bargaining agreement for leaders especially principal accountability.*



### Rowena Shurn

**School:** Capitol Heights ES

**Position:** Teacher

**Local:** PGCEA

**Member:** MSEA 6 years/NEA 6 years

**Association Position:** Local: Membership Committee, Faculty Advisory Council. MSEA: Instructional and Professional Development Committee.

*As a state delegate, I will continue to uphold and support the mission and integrity of MSEA.*



### Amy Jo Smith

**School:** North East MS

**Position:** Teacher

**Local:** CCCTA

**Member:** MSEA 16 years/NEA 16 years

**Association Position:** Local: Treasurer, Negotiations Team, Board of Directors. MSEA: RA delegate. NEA: RA delegate.

*I have had the privilege of attending the NEA Convention for 2 prior years as a county delegate.*



### Betty T. Smith

**Position:** Substitute Teacher

**Local:** MCEA

**Member:** MSEA 30 years/NEA 30 years

**Association Position:** Local: Board of Directors. MSEA: Minority Affairs Committee.

*I want to continue to support students and fellow educators.*



### Lisa Smith

**School:** Linganore HS

**Position:** Teacher

**Local:** FCTA

**Member:** MSEA 6 years/NEA 6 years

**Association Position:** Local: Building representative.

*Teacher: PGCP2 2 years. FCPS 5th year. FCTA Building Representative for 2 years. Delegate to MSEA in 2011. I am looking forward to serving you!*



### Marilyn Miles Thomas

**School:** H. Winship Wheatley ECC

**Position:** Teacher

**Local:** PGCEA

**Member:** MSEA 26 years/NEA 26 years

**Association Position:** Local: Building representative. MSEA: RA delegate. NEA: RA delegate.

*Greetings colleagues, thank you for your vote last year. Please permit me to continue to serve you as a diligent and conscientious delegate.*



### Lois Tillery

**School:** Margaret Brent Regional

**Position:** Teacher

**Local:** PGCEA

**Member:** MSEA 5 years/NEA 5 years

**Association Position:** MSEA: Budget Committee.

*After serving as an NEA Delegate from my Local for more than 5 years, I'm prepared to represent my colleagues throughout the state of Maryland.*



### Stan Truman

**School:** Eastern MS

**Position:** Pupil Personnel Worker

**Local:** MCEA

**Member:** MSEA 22 years/NEA 36 years

**Association Position:** Local: Building representative. MSEA: RA delegate. NEA: RA delegate.

*I want to represent the teachers, children, and parents of Maryland and fight for teacher rights.*



### Matilde E. Vallejos

**Worksite:** Student Services

**Position:** Pupil Personnel Worker

**Local:** MCEA

**Member:** MSEA 30 years/NEA 30 years

**Association Position:** Local: Building representative. MSEA: Minority Affairs Committee. NEA: Hispanic Caucus Mid-Atlantic (director).

*I will continue to be a voice for educators and children.*



### Eboni Walker

**School:** Sargent Shriver ES

**Position:** Teacher

**Local:** MCEA

**Member:** MSEA 4 years/NEA 4 years

**Association Position:** Local: Board of Directors. NEA: Resolutions Committee.

*I serve on my local Board and on the NEA Resolutions Committee. I will continue to represent Maryland at the 2012 NEA RA.*



### Jacqueline Waul

**School:** Huntingtown HS

**Position:** Education Support Professional

**Local:** CAESS

**Member:** MSEA 9 years/NEA 9 years

**Association Position:** Local: Secretary, treasurer, building representative. MSEA: RA delegate, Summer Training Series, ESP Professional Development Day. NEA: ESP National Conference.

*I will work hard to make a difference for the members of MSEA.*



### Joseph Webb

**School:** Suitland HS

**Position:** Teacher

**Local:** PGCEA

**Member:** MSEA 12 years/NEA 40+ years

**Association Position:** Local: Treasurer, Board of Directors. MSEA: RA delegate. NEA: RA delegate.

*"EDUCATION IS OUR HOPE FOR A BETTER TOMORROW." NEA's 2012 clarion call summons us to convene in the Nation's Capital. I shall trumpet our truth.*



### Crystal Avis Weems

**School:** Mutual ES

**Position:** Education Support Professional

**Local:** CAESS

**Member:** MSEA 18 years/NEA 18 years

**Association Position:** Local: Executive Board of Directors. MSEA: RA delegate.

*I will work hard for the members of MSEA.*



### Christiana Weiner

**School:** Seneca Valley HS

**Position:** Teacher

**Local:** MCEA

**Member:** MSEA 13 years/NEA 13 years

**Association Position:** Local: Building representative, elected faculty representative, Political Action and Legislative Support Committee. MSEA: RA delegate. NEA: RA delegate.

*My goal is to advocate for a balanced view that represents all of our members.*



### James Woods

**School:** Frederick Douglass HS

**Position:** Teacher

**Local:** PGCEA

**Member:** MSEA 17 years/NEA 17 years

**Association Position:** Local: Building representative (4 years). MSEA: RA delegate (3 years). NEA: RA delegate (2 years).

*Fellow colleagues: I would be honored to represent you as a MSEA Delegate at the 2012 NEA Convention. Thank you.*



VOTE!

# MSEA ELECTION 2012

## Candidates for MSEA Delegate to the NEA Representative Assembly and Convention

WASHINGTON, D.C. • JUNE 30–JULY 5, 2012

### Bonnie Young

**School:** Burleigh Manor MS

**Position:** Paraeducator

**Local:** HCEA (Howard)

**Member:** MSEA 10 years/NEA 10 years

**Association Position:** *Local:* Building representative, Membership Committee. *MSEA:* RA delegate.

*I am an active advocate for HCEA and a committed individual.*



### LaWanda V. Graham

**School:** Imagine Discovery Public Charter School

**Position:** Paraeducator

**Local:** ESPBC

**Member:** MSEA 3 years/NEA 3 years

**Association Position:** *Local:* Board of Directors. *MSEA:* Special Education Task Force Committee.

*As MSEA delegate candidate, I would love to have your vote. I am concerned about pensions and under funding of schools due to budget cuts.*

### Karen Myers

**School:** White Marsh ES

**Position:** Teacher

**Local:** EASMC

**Member:** MSEA 13 years/NEA 13 years

**Association Position:** *Local:* Board of Directors. *MSEA:* RA delegate. *NEA:* RA delegate.

*If elected I will handle this position professionally and efficiently, making every vote with the good of all in mind. Thank you!*

### Angele Rose Reid

**School:** Oxon Hill MS

**Position:** Teacher

**Local:** PGCEA

**Member:** MSEA 11 years/NEA 11 years

**Association Position:** *Local:* Nominations, Elections, and Credentials Commission.

*I shall be honored if you will cast one of your votes for my candidacy as a MSEA delegate. I am up for the challenge.*

### Margot P. Savoy

**School:** Mattawoman MS

**Position:** Teacher

**Local:** EACC

**Member:** MSEA 10 years/NEA 10 years

**Association Position:** *Local:* Instructional and Professional Development Committee. *MSEA:* Instructional and Professional Development Committee, RA delegate. *NEA:* RA delegate.

*Together, as educators from the suburbs, city, or county we will continue to meet and exceed the expectations necessary to educate future generations.*

### Linda Firman

**School:** Cradlerock ES

**Position:** Education Support Professional

**Local:** HCEA (Howard)

**Member:** MSEA 12 years/NEA 12 years

**Association Position:** *Local:* Building representative.

### Anna-Maria Halstead

**School:** Carroll County

**Position:** Teacher

**Local:** CCEA

**Member:** MSEA 14 years/NEA 14 years

**Association Position:** *Local:* Board of Directors. *MSEA:* Board of Directors. *NEA:* Board of Directors, Black Caucus secretary.

### D. Kathleen Myers

**School:** Lettie Marshall Dent ES

**Position:** Teacher

**Local:** EASMC

**Member:** MSEA 16 years/NEA 16 years

**Association Position:** *Local:* Building representative.

### M. Ofelia Navarrete

**School:** Frederick HS

**Position:** Teacher

**Local:** FCTA

**Member:** MSEA 10 years/NEA 10 years

**Association Position:** *Local:* Civil Rights Committee.

### Cherry L. White

**School:** Ilchester ES

**Position:** School Counselor

**Local:** HCEA (Howard)

**Member:** MSEA 28 years/NEA 28 years

**Association Position:** *Local:* Building representative, Board of Directors, Minority Affairs Committee (co-chair). *MSEA:* RA delegate.

### Irene Williams

**School:** Bonnie Branch MS

**Position:** Teacher

**Local:** HCEA (Howard)

**Member:** MSEA 9 years/NEA 9 years

**Association Position:** *Local:* Building representative.

### Stephanie Barber

**Position:** Teacher

**Local:** PGCEA

### Sharrie Ross

**Position:** Teacher

**Local:** MCEA

### Cathy Zajac

**Position:** Teacher

**Local:** MCEA

### Jeannette Young

**School:** Winfield ES

**Position:** Education Support Professional

**Local:** ESPBC

**Member:** MSEA 17 years/NEA 17 years

**Association Position:** *Local:* Board of Directors (current), treasurer (former), building representative.

*MSEA:* C.A.R.E. (cadre trainer), Systems Thinking/Systems Changing (cadre trainer), Elections Committee for NEA RA (co-chair). *NEA:* RA delegate.

*Vote Jeannette Young for NEA Delegate! As an education advocate I am always determined to help students and educators succeed in obtaining their goals.*



### Linda Shackelford

**School:** Accokeek Academy

**Position:** Teacher

**Local:** PGCEA

**Member:** MSEA 15 years/NEA 15 years

**Association Position:** *Local:* Building representative. *MSEA:* RA delegate (last 4 years). *NEA:* RA delegate (last 3 years).



### Peter H. Singleton

**School:** North Dorchester MS

**Position:** Teacher

**Local:** DE

**Member:** MSEA 40 years/NEA 40 years

**Association Position:** *Local:* Past president, current secretary, Executive Board of Directors. *MSEA:* Bylaws and Rules Committee, RA delegate. *NEA:* RA delegate (14 years).



### Sheila Ebron

**School:** Ilchester ES

**Position:** Paraeducator

**Local:** HCEA (Howard)

**Member:** MSEA 4 years/NEA 4 years

**Association Position:** *Local:* Building representative. *MSEA:* Minority Affairs Committee. *NEA:* RA delegate.

*I am Sheila Ebron and I want to represent you this summer at the NEA convention.*

RETIRED DELEGATES, NEXT PAGE

# MSEA ELECTION 2012

## Candidates for MSEA Delegate to the NEA Representative Assembly and Convention

WASHINGTON, D.C. • JUNE 30–JULY 5, 2012

### MSEA Retired Delegate

#### Leah F. Batts

**Position:** Retired

**Local:** PGCEA

**Member:** MSEA 38 years/NEA 38 years

**Association Position:** Local: Professional development, Minority Affairs Committee, building representative. MSEA: Minority Affairs Committee, RA delegate. NEA: RA delegate, Black Caucus.

*Being an active member of MSEA for 38 years, I welcome the opportunity, as a new retiree, to offer my continued professionalism to my organization.*



#### Betty Makell Coleman

**Position:** Retired

**Local:** TAAAC

**Member:** MSEA 50 years/NEA 45 years

**Association Position:** Local: Vice president, secretary-treasurer. MSEA: Retired Advisory Council secretary, committee chair. NEA: RA delegate, Elections Committee (chair).

*I have worked tirelessly to help retirees secure and maintain their health and Social Security benefits. Please elect me so I may continue working for you.*



#### Susie C. Jablinske

**Position:** Retired

**Local:** TAAAC

**Member:** MSEA 45 years/NEA 45 years

**Association Position:** Local: TAAAC-Retired president, TAAAC president. MSEA: Retired Advisory Committee (chair), Fund for Children and Public Education, Board of Directors. NEA: Legislative Committee, Executive Committee, Board of Directors.

*As a retired teacher-leader, I want to focus my skills to advocate for the concerns of our Retired members at the NEA RA.*



#### Marcella Kehr

**Position:** Retired

**Local:** ESPBC

**Member:** MSEA 42 years/NEA 42 years

**Association Position:** Local: President. MSEA: Board of Directors, Retired Advisory Committee, Women's Concerns Committee. NEA: Board of Directors.

*Please elect Marcella Kehr to NEA/RA. I will continue to serve and build recognition of retiree issues. Vote Marcella Kehr.*



#### Karen Kuker-Kihl

**Position:** Retired

**Local:** PGCEA

**Member:** MSEA 42 years/NEA 42 years

**Association Position:** Local: Board of Directors (9 years), Legislative Committee (16 years), Professional Development Committee (chair) (6 years). MSEA: Treasurer, Board of Directors (17 years), Retired Advisory Council (8 years). NEA: Board of Directors (6 years), Fund for Children and Public Education (5 years), RA delegate (34 years).

*With your continued support for 45 years, I will represent you, advocate for better benefits, and now more than ever, protect our rights.*



#### John R. Kurpjuweit

**Position:** Retired

**Local:** TAAAC

**Member:** MSEA 44 years/NEA 44 years

**Association Position:** Local: President, vice president, Board of Directors. MSEA: Board of Directors, RA delegate, various committees. NEA: NEA Director, National Council of Urban Education Associations (vice president), RA delegate.

*Life-long advocate for educators and quality public education. Experience includes: Local President, NEA Board, MSTA Board, Life Member of MSEA-R, NEA-R and more.*



#### Richard Rubino

**Position:** Retired

**Local:** PGCEA

**Member:** MSEA 38 years/NEA 38 years

**Association Position:** Local: Vice president, treasurer, Negotiations Team. MSEA: Board of Directors, Resolutions Committee, RA delegate. NEA: Resolutions Committee, RA delegate.

*Budget deficits should not be balanced on the backs of hard working NEA members, retired or active. Let's remember who created these fiscal problems.*



#### Rosalind Lucille Yee

**Position:** Retired

**Local:** PGCEA

**Member:** MSEA 45 years/NEA 45 years

**Association Position:** Local: Nominations and Credentials Committee, Instructional Professional Development Committee, Legislative Committee. MSEA: Board of Directors, Budget Committee, Legislative Committee. NEA: Board of Directors, Internal Concerns Committee, Legislative Committee.

*Re-elected nationally to represent retired educators, allow me to represent Maryland retired members. Helped established monetary organizing retired grants and Distinguished Retired Educator Volunteer Award.*



#### Marion Milam

**Position:** Retired

**Local:** PGCEA

**Member:** MSEA 16 years/NEA 16 years

**Association Position:** Local: Board of Directors. MSEA: RA delegate. NEA: RA delegate.



VOTE!